

#EdoDecides #OndoDecides

ELECTIONS TOOLKIT FOR RELIGIOUS LEADERS

VOLUME 10





*INEC does not count **PRAYER POINTS!**
It counts **VOTES!**
PRAY & VOTE!*

Contents

2	Election Dates
2	The Candidates
3	Voting Procedure
4	Election Data
5	Why Should You Care?
6	What Can We Do?
7	How to Select Credible Candidates
8	Quick Facts
9	Support
10	Political Parties in Nigeria

REGISTER TO VOTE
SELECT CREDIBLE CANDIDATES
VOTE NOT FIGHT
PROTECT YOUR VOTE

ELECTION DATES



**Saturday,
September 21, 2024**

*Edo Governorship
Election*

**Saturday,
November 16, 2024**

*Ondo Governorship
Election*

These are the dates announced by INEC.

On election day, accreditation and voting shall commence at **8:30am** and close at **2:30pm**.

All voters already on the queue by 2:30pm shall be accredited and allowed to vote.

THE CANDIDATES

	#EdoDecdes2024	OndoDecides2024
 Governorship Candidates	17	17
 Male Candidates	16	17
 Female Candidates	1	0

VOTING PROCEDURE



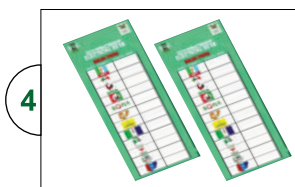
Join the queue with your PVC.



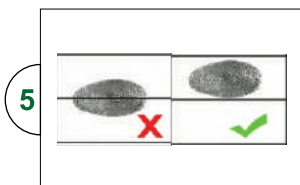
At your turn, you will be asked to place your **finger** on the **fingerprint scanner** of the Bimodal Voter Accreditation System (BVAS) for authentication. If it fails, **facial authentication** using BVAS will be adopted. If you can not be authenticated with your fingerprint or face, **you will not be able to vote.**



You **will not be allowed to use your phones and tablets** between the time you collect your ballot paper and cast your vote.



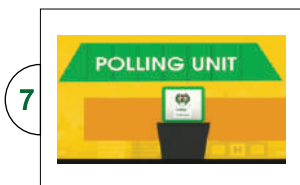
Your **ballot paper** with the political parties logos **must be dated, signed and stamped.**



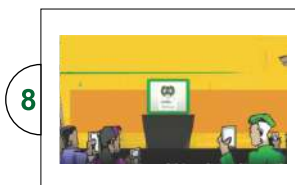
Thumb print your ballot in secret. Be careful not to allow the ink to stain other parts of the ballot paper.



Fold your ballot paper vertically and drop it in the ballot box.

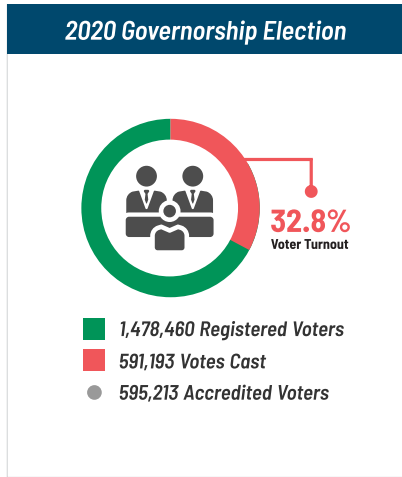
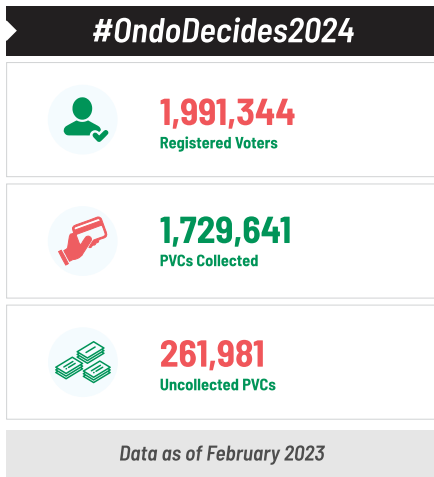
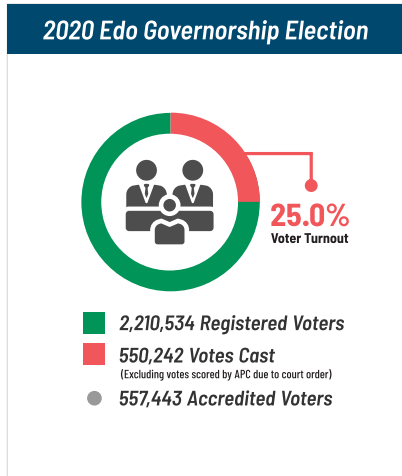
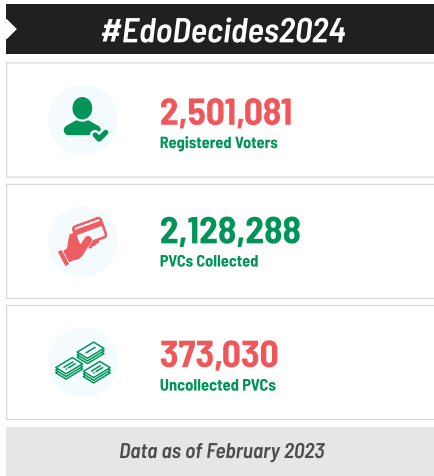


Move from the voting area and pick up your mobile phone & other devices.



You can **stay within the polling unit to witness** the sorting and counting of votes as well as the announcement of results.

ELECTION DATA



Registered voters will increase after INEC adds new voters who participated in the Continuous Voter Registration(CVR) process that happened from May 27 - June 9. Collected and uncollected Permanent Voters Cards (PVCs) will change once the PVC collection exercise ends on October 29, 2024.

Voter turnout was calculated using the data for accredited voters and registered voters. INEC did not conduct registration of new voters for the 2020 elections because of COVID.

WHY SHOULD YOU CARE?



*It is hereby accordingly declared that **sovereignty belongs to the people of Nigeria** from whom government through this Constitution derives all its powers and authority.*

- Section 14(2)(a) of the 1999 Nigerian Constitution (as amended)

The above subsection of the Constitution is not only noble, but the very heart of modern democracy. It is the power of citizens that empowers all other authorities in any democracy.

It is therefore important to let citizens know that the **Office of the Citizen** is the **highest** office in the land. Citizens must wake up to that consciousness and accept the responsibilities that come with it.

Do NOT Discriminate

Do NOT use possession of a Permanent Voter's Card (PVC) to grant access to your place of worship. It is noble to desire that all your congregants get their PVCs and participate in the electoral process, but it is their prerogative to exercise that civic responsibility. As such, you should NOT penalise those who did not register to vote.

To use a PVC to grant access to a place of worship; prevent congregants from serving or benefit from being a congregant is to go against the tenets of any faith that teaches **love**.

Education and moral persuasion are more effective ways of getting your congregants to understand the importance of participating in the electoral process.

WHAT CAN WE DO?

Elections are about messaging, mobilisation and the critical numbers who show up to **vote on election day**.

In 2015, 45.4% of registered voters, determined our President and it was similar at other levels.

In 2019, 35.66% of registered voters, determined our President and it was similar at other levels.

In 2023, 27.05% of registered voters, determined our President and it was similar at other levels.

Some roles YOU can play:

1. Ensure all information shared is verified.
2. **From the pulpit**, encourage people to **vote**. It's their constitutional right and a civic responsibility.
3. Reiterate that votes will be counted and their votes matter.
4. Put election information in every bulletin. If you have video news, include it as well.
5. Do **NOT** be partisan. Instead, encourage your congregation to score every candidate against values that promote a society that is just, equitable, governed with integrity, respect for human life, merit and any other values as they deem fit that aligns with the teachings of their faith.
6. If you have members that are vying for office, you can give them a platform to talk about their journey (but not campaign).
7. Pray for members that are contesting.
8. Encourage members to join political parties if they are interested.
9. For voting centres in your neighbourhood, provide tents, chairs, drinks and snacks as you can, to relieve the pressure.
10. Send observers to voting centres to document challenges and escalate as needed. They can also volunteer while there.

HOW TO SELECT CREDIBLE CANDIDATES



Select a candidate with these 5Cs -
**Competence,
Capacity,
Character,
Courage &
Compassion.**



How much is being offered for your vote? What is it worth **over 4 years?**



Look out for debates and dialogues on TV and radio!



Don't vote for a candidate you do not know anything about!



Understand their manifestos and **ask questions** about their plans.

QUICK FACTS

EDO STATE



Godwin Obaseki
Governor
(2016 -Present)

ONDO STATE



Lucky Aiyedatiwa
Governor
(December 2023 -Present)
Sworn in as governor to complete Governor Rotimi Akeredolu's tenure.

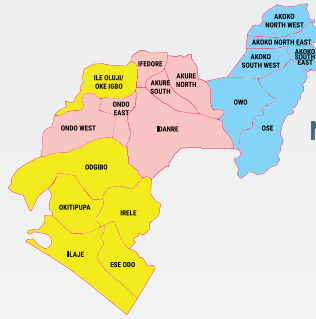
Number of PUs
4,519



Local Government Areas (LGAs) - 18

EDO NORTH 6	EDO CENTRAL 5	EDO SOUTH 7
-------------	---------------	-------------

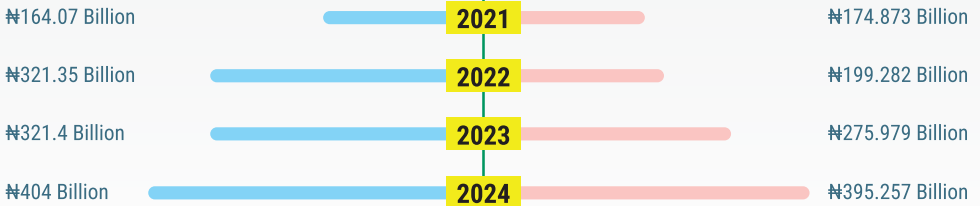
Number of PUs
3,933



Local Government Areas (LGAs) - 18

ONDO NORTH 6	ONDO CENTRAL 6	ONDO SOUTH 6
--------------	----------------	--------------

Budget Since Last Election



To locate your Polling unit, you can visit <https://gotomypu.com/>

SUPPORT

EiE is available to:



Educate your congregation at no cost, except logistics. It can also be done virtually.



Work with your team on communications.



Answer questions if it's difficult to contact INEC's Citizens' Contact Centre.



POLITICAL PARTIES IN NIGERIA

There are currently 19 parties registered by INEC:

1. Accord
2. Action Alliance (AA)
3. Action Democratic Party (ADP)
4. Action Peoples Party (APP)
5. Africa Action Congress (AAC)
6. African Democratic Congress (ADC)
7. All Progressives Congress (APC)
8. All Progressives Grand Alliance (APGA)
9. Allied Peoples Movement (APM)
10. Boot Party (BP)
11. Labour Party (LP)
12. National Rescue Movement (NRM)
13. New Nigeria Peoples Party (NNPP)
14. Peoples Democratic Party (PDP)
15. Peoples Redemption Party (PRP)
16. Social Democratic Party (SDP)
17. Young Progressive Party (YPP)
18. Zenith Labour Party (ZLP)
19. Youth Party (YP)

Contact information for the parties are on INEC's website -
www.inecnigeria.org/political-parties

“The future of this vast country must depend, in the main, on the efforts of ourselves to help ourselves.”

- Tafawa Balewa

(Nigeria's First Prime Minister)



www.eienigeria.org | info@eienigeria.org | 07087784788

